

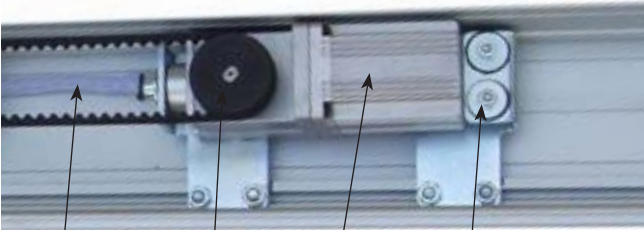
EDM-14Eco Control Box

EDM-14Eco Control Box



No:	Description
1. EMICON	Connection of EMICON Harness to Control by Plug in
2. Motor	Connection of Motor to Control by Plug in
3. Buzzer	Audible indication of error status or other applications
4. Enter Prog.	Hold to enter programme mode
5. LED Display	LED Display is a visual display for the installer to correctly set up and operate EDM-E Operator. LED Display: – LED1 – Function/Application – LED2 – Parameter Value – POWER LED – Power Indicator – INPUT LED – Signal Input Indicator
6. + Reset	1/4" Operational settings – value can be increased. Reset Button – Operation factory settings can be restored.
7. Test	1/2" Operational settings – value can be decreased. Test Button – Used to check the basic function of the operator when servicing or installation. Activation signal for Test open cycle.
8. Power	Input 200–240V AC 3pin Plug in

EDM-14Eco Motor Gear Box



No:	Description
1.	Connection Harness to EDM-14Eco Control Box
2.	Motor Pulley
3.	Brushless DC Motor
4.	Motor Mount Base with Vibration Proof Rubber

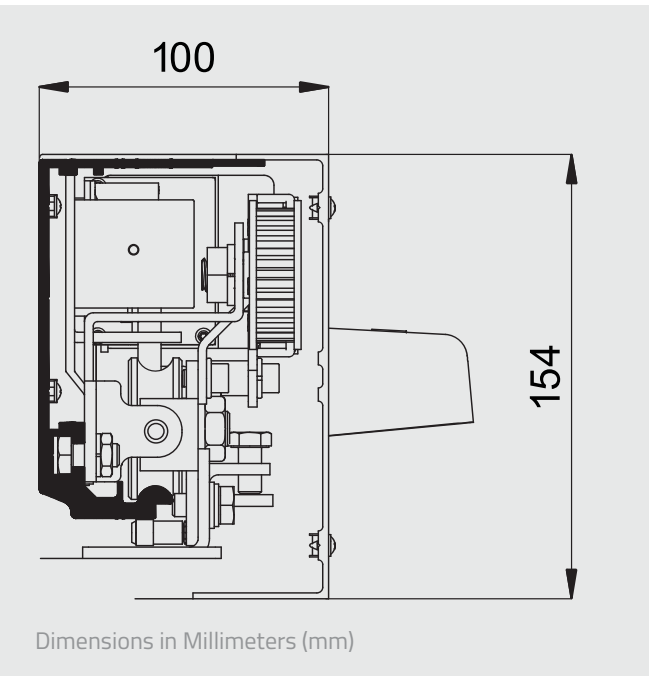
Specification

Model	EDM-14Eco-A	EDM-14Eco-D
Application	Single	Double
Applicable Door	x1 leaf width – 1000mm (max)	x2 leaf width – 2000mm (max)
Door Weight (max)	100kg	70kg x2
Power Supply	AC100–240V 50.60Hz 2A	
Maximum Consumption	150W	
Speed	150–500mm/s (adjustable)	
Motor	Brushless DC Motor	
Gear box	Geared	
Control System	Microprocessor	
Brake	Automatic	
Door opening time	0 – 60sec (10 adjustable positions)	
Pressure to eliminate door frame gaps	A small force may be adjusted in order to keep the door closed or open. Force from 0 to 8kg (5 adjustable positions) When opening: Door stops. Returns to normal operation upon the activation of a sensor, or after 10 sec. When closing: Door opens, then closes at slow speed. Returns to normal operation upon the activation of a sensor, or after 10 sec.	
Safety obstruction function		
Failure detection	Warning and specification of error by means of an acoustic alarm and visual display	
Partial opening	10 positions for partial opening operation, from 5% to 90%	
Emergency battery	Allows opening or closing in an emergency situation by battery	
Electromagnetic lock	Fail Secure – MRC-1 (LK1) / Fail Safe – MRC-2 (LK2) (Optional)	
Operating temperature and humidity	Ambient temperature: from 0° C to +50° C (no condensation or icing). Ambient humidity: from 30% to 85% (the environment must be free of hazardous materials)	

Delivery

MICOM EDM-14Eco - Supplied in formats as follows:

- EDM 'COMPLETE OPERATOR' consisting of: Base Rail, Cover, Control Box, EMICON Board, Motor Gear Box, End Covers, Tooth Belt, Belt Bracket Link Assembly, Belt Connection Single & Double Door, Idle Pulley Assembly, Hanger Roller Brackets x4 and Stopper x 2.
- COMPLETE OPERATOR - Standard Rail Length: Single Leaf - 2000mm, Double leaf - 4000mm
- EDM 'FULL KIT' - (Without Rail & Cover) consisting of: Control Box, EMICON Board, Motor Gear Box, Tooth Belt (7M), Belt Bracket Link Assembly, Belt Connection Single & Double Door, Idle Pulley Assembly, Hanger Roller Brackets x4 and stopper x 2.
- RAIL & COVER - (Material Only) - Standard Length: Single Leaf - 2000mm, Double leaf - 4000mm



MICOM
AUTODOOR
www.micomautodoor.com

UK / European Office
The Grainger Suite // Regent Centre // Gosforth
Newcastle upon Tyne // NE3 3PF // United Kingdom

Telephone. +44 (0)191 233 6323
Facsimile. +44 (0)191 284 0222
Email. info@micomautodoor.com

Head Office - Japan
6th Floor // Marutake-Honmachi Building 6-18
Honmachi 1-Chome Chuo-ku // Osaka 541-0053 // Japan

Telephone. +81 6 6265 1130
Facsimile. +81 6 6265 1132
Email. info@micomautodoor.com

100% Japanese Quality and Engineering
MICOM & NHN are registered trademarks and divisions of Kenwa Company Limited, Osaka, Japan



EDM-14Eco

Automatic sliding door operator
Exceptional quality, economical prices

CE EN16005 Compliant

KENWA
Open to new possibilities

MICOM
AUTODOOR
www.micomautodoor.com

Introduction

Introduction

EDM-14Eco is the prefect fit in a price competitive market. Our EDM E-Series economy model will give you a sharp competitive edge over the competition. Allowing you not only to compete not on price, but offer premium quality and a host of features and benefits.

Utilising our advanced microprocessor control unit together with a brushless motor, we offer near silent and smooth motion up to 500mm/s. Highly reliable and using only quality electronic parts, EDM-14Eco adapts effortlessly to varied door weight capacities, up to 100 Kg per single leaf and 70kg per double leaf.

Installation is simple and achieved in several steps. Starting with a one-time learning cycle of the door stroke and offering variable function adjustment for single or double door leaves. Operational parameters can be adjusted to suit individual installations through our easily accessible LED visual display found on EDM-14Eco control box face.

As part of the EDM E-Series range, EDM-14Eco is designed to meet the highest safety demands of the European market offering CE and EN16005 compliance. Providing assured long term service, EDM-14Eco is truly cost effective.

Main Features

- > Economical & Cost Effective Sliding Door Solution
- > Power input 100-240VAC (50/60Hz)
- > Door Capacity 100- 70kg per leaf
- > Door Open Speed 500mm/s max
- > Safe Close Speed 375mm/s max
- > Memorised one time door stroke
- > Easily accessible sensor and threshold safety inputs
- > 24V DC Power Output for Accessories
- > LED Digital Control Display
- > Wide Parameter Adjustments
- > Door Speed & Braking Adjustment
- > Energy Saving (% Open) Function
- > Emergency Stop (Open or Close)
- > Ratchet or Flip-Flop Function
- > Battery Open/Close with Monitor as standard
- > Electromagnetic Lock (Fail Safe/Secure) Option
- > Safe & Long Term Operation Guaranteed
- > Selector Switch supplied as standard
- > EN16005 compliant

EMICON Communicator - Quick and Easy Connections to Accessories and Ancillaries

Our **EMICON** interface board offers a quick means of installation. Communication of all accessory and safety signals are combined with battery input and lock control. Working in parallel, these signals are controlled via our Selector Switch for greater ease of operation by the end user.

MICOM Rotary Key Selector Switch is supplied as standard together with EDM-E Series operator allowing selection of 4 separate door modes. In a fire retardant black plastic mount box with cover design in white, MICOM function selectors can be fitted to walls or aluminium frames alike.

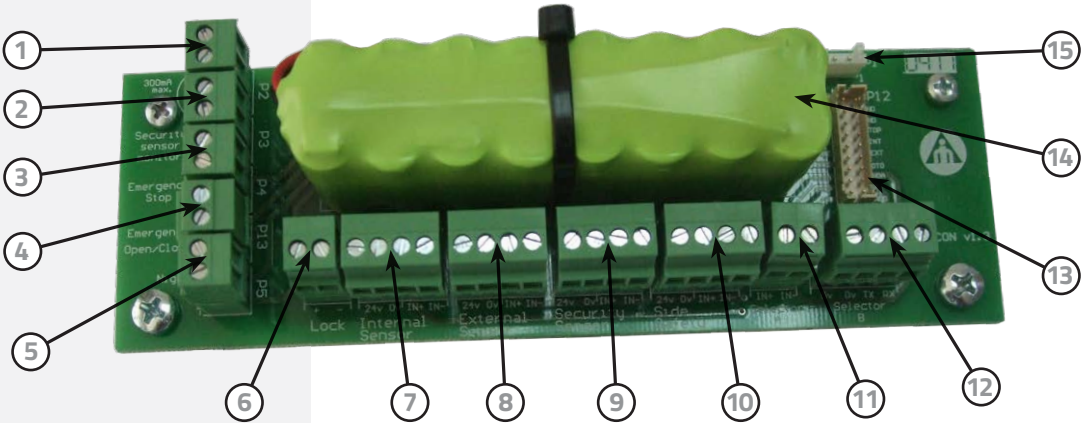
Functions:

- > Lock – Night/Closed
- > Exit Only
- > Automatic
- > Hold Open



The **EMICON** communicator interconnects the Control Unit with the different peripheral components as follows:

No:	Description
1.	24V Output 0.3A max
2.	Monitoring Input
3.	Emergency Stop Input
4.	Emergency Open/Close Input
5.	Night Switch
6.	E-Lock Output
7.	Internal Sensor with 24V Output



No:	Description
8.	External Sensor with 24V Output
9.	Safety Beam Sensor with 24V Output
10.	Side Screen Sensor with 24V Output
11.	Selector A
12.	Selector B
13.	Control Unit Connector
14.	Battery
15.	Battery Connector

EDM-14Eco when used without monitoring can also accept all current sensors available in the world market today, such as BEA Eagle & Optex OA-203C together with threshold safety beam protection.

EAGLE Series is a microwave sensor which detects movement. Utilising a planar antenna together with multi directional detection modes, the EAGLE offers high levels of stability and reliability. It is the solution for all types of automatic doors, irrespective of the surroundings utilizing K-band microwave technology.



OS-12C Safety Beam is an active infrared safety beam system. Its amplifier and sensor heads are designed for fast, simple installation while maintaining the highest standards of safety and reliability. Recognized by door professionals worldwide for its reliability and resistance to sunlight and other interference.



Accessories

Accessories

MICOM Digital Selector Switch offers further options of door control. A digital touchpad, allows selection of 6 separate door modes. Economic in design, MICOM Digital Selectors are easy to install and operate. Supplied in a fire retardant black plastic mount box, with attractive cover design in white, our function selectors can be fitted to walls or aluminium frames alike.

Functions:

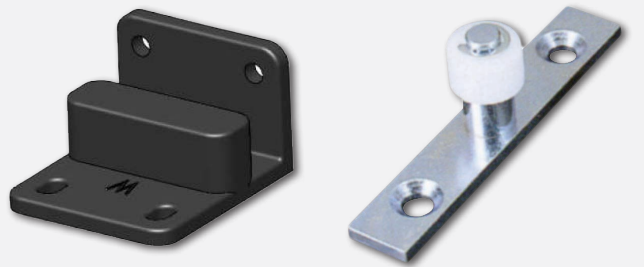
- > Lock – Night/Closed
- > Exit Only
- > Entry Only
- > Automatic
- > Hold Open
- > Half Open



Door Profile Solutions - Various Fixed and Moving profile designs available without glass.



Frameless Glass Brackets - Fitting Brackets for 10mm and 12mm Glass thickness available without glass.



- > **Floor Guides** - Various floor guides for framed and frameless glass doors available.

Product Summary

Product Summary

No:	Description
1.	End Cover
2.	Idle Pulley
3.	Belt Tightening Bracket
4.	Belt
5.	Hanger Roller Bracket
6.	EMICON Board with Battery
7.	Control Box EDM-14Eco
8.	Motor Gear Box EDM-14Eco
9.	End Stopper
10.	Base Rail



EDM-E Series

EDM-E Series

EDM 18E



EDM 18E 2S/D



EDM 30E



EDM18E RD



EDM-14Eco Series complies with all new EU regulations (EN16005) for enhanced automatic door safety. Designed for use with a new range of sensors such as BEA IXIO-S & Optex OA-Axis-T.

IXIO-S is an active infrared presence sensor. The tridimensional area of its infrared curtain protects the users from any contact with the doors. Adjustment is made easier with an LCD screen offering 10 different widths of curtains, to cover the full travel area of the door.



OA-AXIS-T Series based on active infrared technology. Developed as a combination sensor for threshold safety and activation, the OA-Axis T is in compliance with the latest European and local regulations as EN 16005 and DIN 18650, tested and approved by the German test organisation TÜV. Due to its variety in output options the OA-Axis series meets the requirements in various markets throughout Europe.

